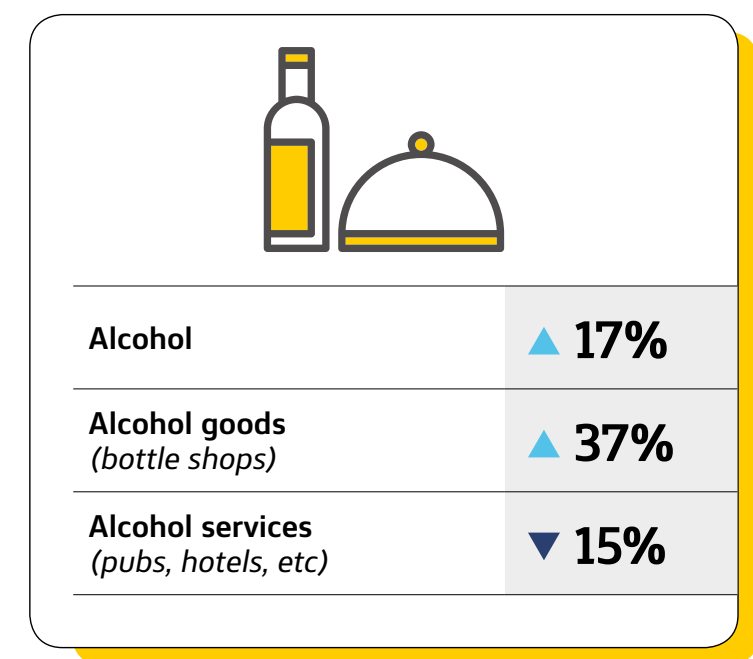
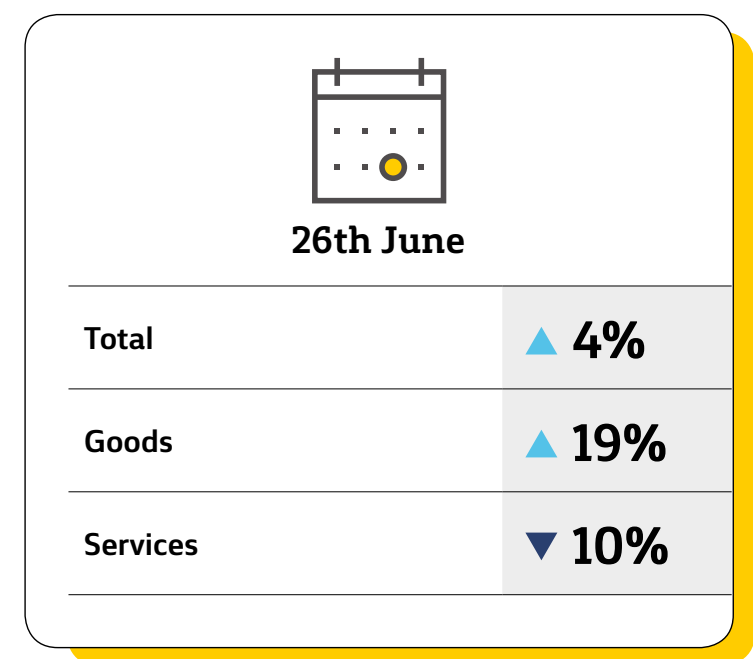
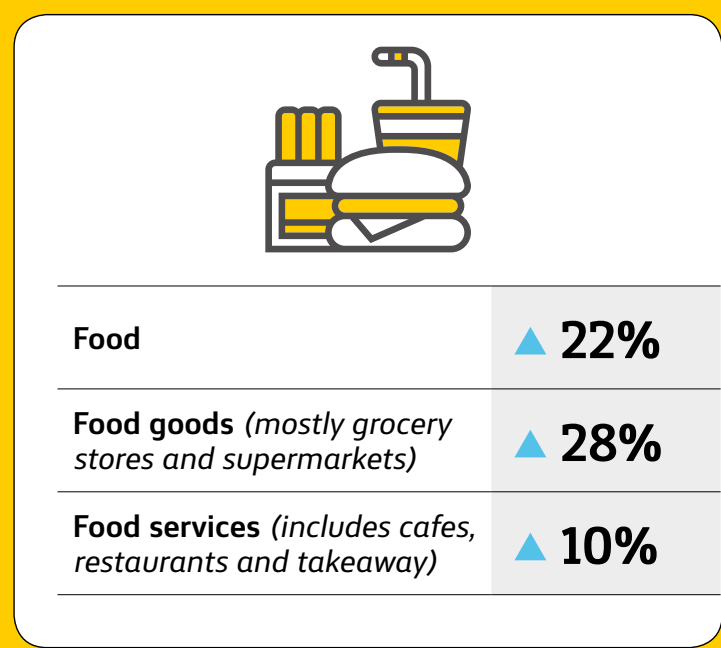
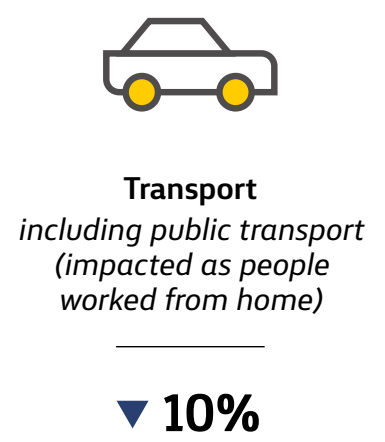


Commonwealth Bank's Change on Card Spend.

CBA credit and debit card spending over the week ending 26 June 2020 is compared to the results from a year earlier. The following information has been developed by the Global Economic & Markets Research team.



- Spending on goods (primarily at supermarkets) ticked up last week as reports of some panic buying emerged as coronavirus case numbers rose in Victoria.



Source: Commonwealth Bank of Australia, Global Economic & Markets Research report "CBA Card Spend – ending 26th June 2020", published 30 June 2020, author Belinda Allen. Full Global Economic & Markets Research disclaimers can be found at www.commbankresearch.com.au.

The Commonwealth Bank of Australia ABN 48 123 124 AFSL 234945 ("the Bank") and its subsidiaries, including Commonwealth Securities Limited ABN 60 067 254 300 AFSL 238814 ("CommSec"), Commonwealth Australia Securities LLC, CBA Europe Ltd and Global Markets Research, are domestic or foreign entities or business areas of the Commonwealth Bank Group of Companies (CBGOC). CBGOC and their directors, employees and their representatives are referred to in this Appendix as the "Group".

This report is published solely for information purposes. As this information has been prepared without considering your objectives, financial situation or needs, you should, before acting on the information, consider its appropriateness to your circumstances and, if necessary seek appropriate professional or financial advice, including tax and legal advice. This information is based on CBA data. This refers to the Bank's proprietary data that is sourced from the Bank's internal systems and may include, but not be limited to, credit card transaction data, merchant facility transaction data and applications for credit. The Bank takes reasonable steps to ensure that its proprietary data is accurate, and any opinions, conclusions or recommendations are reasonably held or made as at the time of compilation of this report. As the statistics take into account only the Bank's data, no representation or warranty is made as to the completeness of the data and it may not reflect all trends in the market. All customer data used, or represented, in this report is anonymised and aggregated before analysis and is used, and disclosed, in accordance with the Group's Privacy Policy Statement. We are under no obligation to, and do not, update or keep current the information contained in this report. Neither the Bank nor any of its affiliates or subsidiaries accepts liability for any loss or damage arising out of the use of all or any part of this report. All material presented in this report, unless specifically indicated otherwise, is under copyright of the Bank.