

# Trade Transaction Fees & Charges Schedule

Effective from: 20 October 2023

Out of pocket expenses applicable to each transaction, and charges deducted or collected by correspondent banks are in addition to these charges.

### Import Documentary Collections

<b>Document Handling Fee</b>	0.25% of collection amount Minimum AUD90 Maximum AUD850
<b>Accepted Bills Received for Payment</b>	AUD80
<b>Documents Free of Payment</b> (Charged where an overseas bank instructs us to release collection documents to you free of payment)	AUD80
<b>Consignment Fee</b> (Endorsement of shipping documents consigned to the bank)	AUD100
<b>Air Waybill Release Issuance</b>	AUD90
<b>Avalisation of Bills of Exchange</b>	Price on application
<b>Dishonour Fee</b> (Charged on the dishonour of payment instrument by the institution on which it is drawn)	AUD80
<b>Re-presentation Fee</b> (Charged when we need to re-present a dishonoured payment instrument)	AUD80
<b>Additional Handling Fee</b> (Charged in addition to document handling fee where amendments to the terms of the collection are advised to the presenting bank or on dishonour)	AUD80

## Import Documentary Letters of Credit

<b>Issuance</b> (via manual channel)	AUD150 plus SWIFT fee
<b>Issuance</b> (via Bank's e-channel)	AUD75 plus SWIFT fee
<b>Amendment</b> (via manual channel)	AUD100 plus SWIFT fee (per amendment)
<b>Amendment</b> (via Bank's e-channel)	AUD50 plus SWIFT fee (per amendment)
<b>Cancellation Fee</b> (When we agree to cancel an IDLC for you)	0.25% of undrawn amount Minimum AUD75
<b>Expired Undrawn Balance Fee</b> (Where IDLC balance at expiry is equal to or greater than AUD 5,000 or equivalent)	0.25% of undrawn amount Minimum AUD75
<b>Cash Covered Issuance Structuring</b> (Charged in addition to applicable issuance and document handling fees for cash covered IDLC)	AUD250
<b>Document Handling Fee</b> (Applicable to each drawing received)	0.375% Minimum AUD100 No maximum
<b>Acceptance/Deferred Payment Fee</b> (Charged where we pay an IDLC on a term basis rather than at sight)	1.5% p.a. Minimum AUD80
<b>Discrepancy Fee</b> (Deducted from proceeds remitted where charges are for the beneficiary's account, otherwise to be charged to the applicant.)	USD100 or equivalent in other currency
<b>Reimbursement (Paying Bank) Commission</b> (Deducted from proceeds remitted where charges are for the beneficiary's account, otherwise to be charged to the applicant.)	USD100 or equivalent in other currency

## Foreign Bills Negotiated

<b>Document Handling Fee</b>	0.25% of FBN amount Minimum AUD90 Maximum AUD850
------------------------------	--

<b>Additional Handling Fee</b> (Charged in addition to document handling fee where amendments to the terms of the collection are advised to the presenting bank or on dishonour)	AUD80 (inclusive of GST)
---	--------------------------

<b>Documents Free of Payment</b> (Charged when you, as a drawer, instruct us to instruct an overseas bank to release collection documents free of payment)	AUD80 (inclusive of GST)
---	--------------------------

<b>Tracer Message Sent via SWIFT</b> (Charged to enquire about documents sent for collection)	AUD15
--	-------

## Export Documentary Collections

<b>Document Handling Fee</b>	0.25% of the collection amount Minimum AUD90 Maximum AUD850 (inclusive of GST)
------------------------------	--

<b>Additional Handling Fee</b> (Charged in addition to the document handling fee where amendments to the terms of collection are advised to the presenting bank or on dishonour)	AUD80 (includes of GST)
---	-------------------------

<b>Documents Free of Payment</b> (Charged when you, as a drawer, instruct us to instruct an overseas bank to release collection documents free of payment)	AUD80 (includes of GST)
---	-------------------------

<b>Tracer Message Sent via SWIFT</b> (Charged to enquire about documents sent for collection)	AUD15
--	-------

## Export Documentary Letters of Credit

<b>Advising Fee</b> (Charged for each EDLC advised to non-CBA customers; refundable against presentation of shipping documents to CBA)	AUD90
<b>Advising of Amendment Fee</b> (Charged for each EDLC amendment advised to non-CBA customers; refundable against presentation of shipping documents to CBA)	AUD50
<b>Transfer of Export Documentary Letter of Credit</b>	0.25% on the value of the transfer, Minimum AUD2,000
<b>Transfer of Amendment</b>	AUD100
<b>Back-to-back Letter of Credit</b>	Price on application
<b>Assignment of Proceeds</b>	AUD100 per assignment
<b>Confirmation of Export Documentary Letter of Credit</b>	Price on application
<b>Without Recourse Export Finance</b>	Price on application
<b>Document Handling Fee</b> (Applicable to each drawing received)	0.25% of drawing amount Minimum AUD80 Maximum AUD1000
<b>Acceptance of Term Drafts Drawn on CBA</b>	Price on application Minimum AUD80
<b>Negotiation Under Reserve</b> (Charged in addition to document handling fee)	AUD100
<b>Discrepancy Fee</b>	AUD50 per set of documents
<b>Additional Handling Fee</b>	AUD50
<b>SWIFT Fee</b> (Deducted from proceeds remitted where charges are for the beneficiary's account, otherwise chargeable to the applicant)	AUD15

## Standby Letter of Credit/Bank Guarantee/Bond (Inward)

<b>Advising Fee</b> (Charged for each instrument advised to a non-CBA customer)	AUD250
<b>Advising Amendment Fee</b> (Charged for each instrument advised to a non-CBA customer)	AUD100 per amendment
<b>Claims/Demand Handling Fee</b> (Collection Service)	AUD350
<b>Authentication Fee</b> (Authentication of hardcopy of SBLC/Bank Guarantee/Bond issued by another bank)	AUD250

## Trade Advances

<b>Drawdown</b>	AUD50
<b>Rollover</b>	AUD75
<b>Prepayment</b> (Charged if the advance is repaid prior to maturity)	AUD50 plus break costs if applicable

## Trade Finance Facility

<b>Establishment Fee</b>	Price on application
<b>Facility Fee</b>	Price on application
<b>Interest</b>	Price on application - where applicable, chargeable at a rate relevant to the currency, term and amount

## Out of Pocket Expense

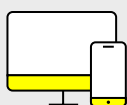
<b>SWIFT per message</b>	AUD15
<b>Courier (International)</b>	At cost - minimum AUD30
<b>Courier (Domestic)</b>	At cost - minimum AUD20
<b>Express Post</b>	At cost - minimum AUD10

## Bank's Trade E-Channel

<b>System set-up</b>	Waived (Free of Charge)*
<b>Monthly channel cost</b>	Waived (Free of Charge)*

\*The Bank reserves the right to change this in the future after provision of a suitable period of notice to all impacted customers.

### For more information



Go to **commbank.com.au** or call **1300 654 112**  
(8.30am to 5.30pm AEST Monday to Friday)

**Important Information:** When we provide a foreign exchange service to you for the conversion of one currency to another currency, we will apply the following exchange rate to the transaction (unless otherwise negotiated with the Bank):

Where one of the currencies to be exchanged in your transaction includes Australian dollars (AUD), the exchange rate applied will be as quoted by the Bank on <https://www.commbank.com.au/personal/international/foreign-exchange-rates.html> with reference to:

- 'Send International Money Transfer' if your transaction involves you selling AUD and buying a foreign currency, or
- 'Receive International Money Transfer' if your transaction involves you buying AUD and selling a foreign currency.

Where none of the currencies in your transaction includes AUD, please refer to the 'Foreign Exchange Calculator' located at the above URL.

Please note that fees and charges may apply to a foreign exchange conversion. Any applicable fees and charges will be set out in the 'Standard fees and charges for international payments and travel funds' available on the Bank's website detailed above.

Commonwealth Bank has a number of personnel who are experienced in import and export transactions and are well equipped to discuss a trader's individual requirements. They will provide assistance on the most appropriate way to structure a transaction, making the best use of trader's financial resources, whilst at the same time providing information on mitigating the risks that are likely to be encountered.

To be placed in contact with one of our Trade Specialists, please call the Commonwealth Bank Trade Service Centre on 1300 654 112 (8.30am to 5.30pm AEST Monday to Friday).

The Bank reserves the right to impose a new fee or vary existing fees shown in this brochure. Where the Banking Code of Practice applies, variations will be notified to Commonwealth Bank customers in accordance with the Banking Code of Practice.

