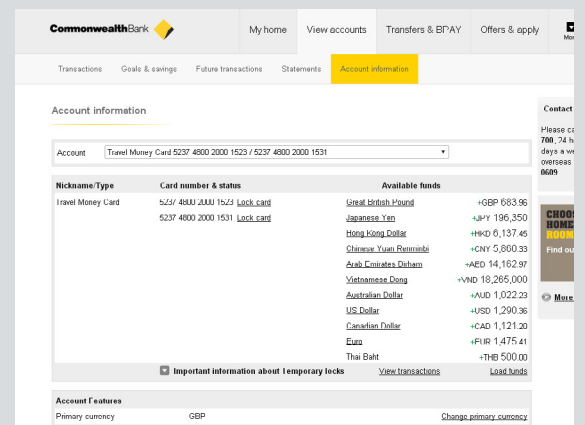


TRAVEL MONEY CARD IS NOW IN NETBANK.

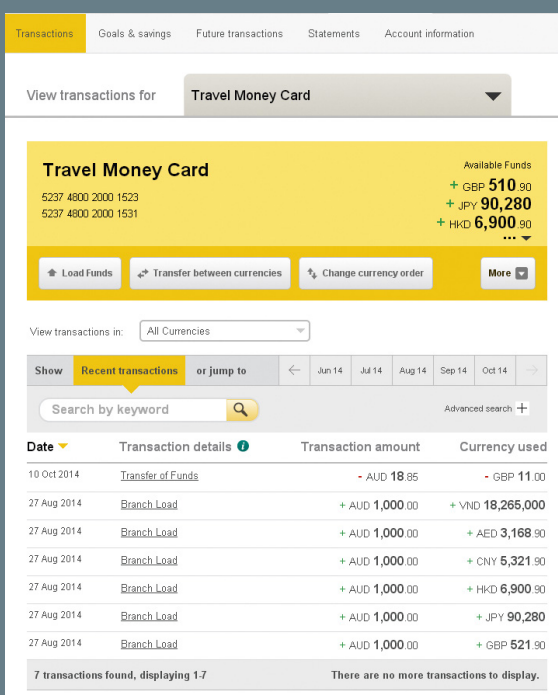
IN NETBANK, YOU'LL BE ABLE TO:

- Check your current balance and transaction history
- Transfer to and from selected CommBank accounts in **real time**
- Load up to 13 currencies **fee-free** at locked-in exchange rates
- Transfer between Travel Money Cards in **real time**
- Change your currency order so that funds automatically deduct from the currency of your choice
- Change your PIN
- Lock and unlock your card for greater control and security
- Set up alerts to monitor your balance.



Below is a guide on the different functionality that you can access to manage your card in NetBank.

TRANSACTION HISTORY



View transactions for **Travel Money Card**

Travel Money Card Available Funds

5237 4800 2000 1523 + GBP **510.90**

5237 4800 2000 1531 + JPY **90,280**

+ HKD **6,900.90**

Load Funds | Transfer between currencies | Change currency order | More

View transactions in: All Currencies

Show **Recent transactions** or jump to: Jun 14 | Jul 14 | Aug 14 | Sep 14 | Oct 14

Search by keyword

Date	Transaction details	Transaction amount	Currency used
10 Oct 2014	Transfer of Funds	- AUD 18.95	- GBP 11.00
27 Aug 2014	Branch Load	+ AUD 1,000.00	+ VND 18,265,000
27 Aug 2014	Branch Load	+ AUD 1,000.00	+ AED 3,168.90
27 Aug 2014	Branch Load	+ AUD 1,000.00	+ CNY 5,321.90
27 Aug 2014	Branch Load	+ AUD 1,000.00	+ HKD 6,900.90
27 Aug 2014	Branch Load	+ AUD 1,000.00	+ JPY 90,280
27 Aug 2014	Branch Load	+ AUD 1,000.00	+ GBP 521.90

7 transactions found, displaying 1-7 | There are no more transactions to display.

Your Travel Money Card transactions are displayed a little bit differently compared to your other accounts.

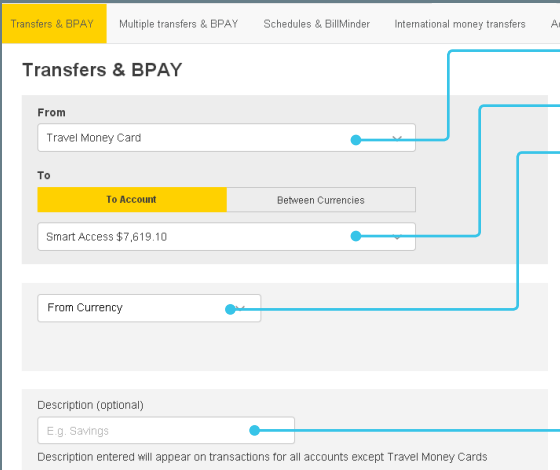
The Transaction amount displays the currency and the amount charged for the transaction and the Currency used displays the currency and the amount actually used on your card for the transaction.

In certain situations, a currency order will apply on your card which means the currency may be different to the transaction amount. This can occur if:

- You used your card to pay for something in a currency you didn't load on your card
- You didn't have enough funds loaded in the currency you wanted to pay with.

For information around currency order please see the "Manage my currencies" page. From this page, you can also view the balances you have available on each of your currencies and setup your alerts.

LOAD FUNDS



Transfers & BPAY

From: Travel Money Card

To: **To Account** (Selected) | Between Currencies

Smart Access \$7,619.10

From Currency: [Dropdown]

Description (optional): E.g. Savings

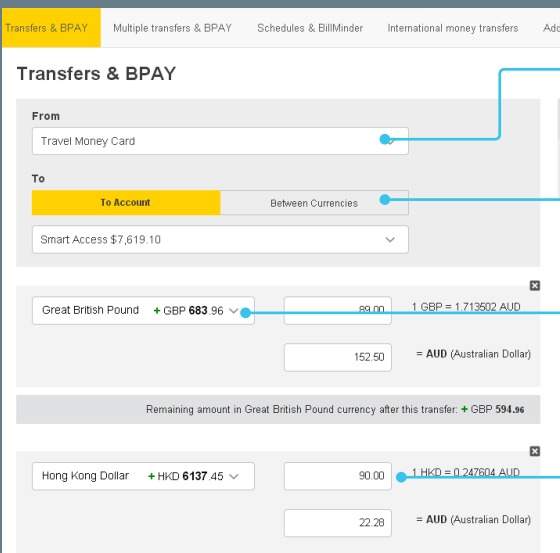
Description entered will appear on transactions for all accounts except Travel Money Cards

From the Transfers & BPAY® page:

- 1 Select an eligible CommBank account to transfer from
- 2 Pick a Travel Money Card you'd like to transfer to
- 3 Choose any currency that's already on your card or select a new one
- 4 Enter an amount and a transfer description to proceed with the transfer
- 5 Your card will be loaded in real time.

You can also load your card via BPAY but this may take up to 48 hours for the funds to arrive.

TRANSFER BETWEEN CURRENCIES



Transfers & BPAY

From: Travel Money Card

To: **To Account** | **Between Currencies** (Selected)

Smart Access \$7,619.10

Great British Pound + GBP 683.96 [Dropdown] [Amount] 1 GBP = 1.713502 AUD

[Amount] = AUD (Australian Dollar)

Remaining amount in Great British Pound currency after this transfer: + GBP 594.96

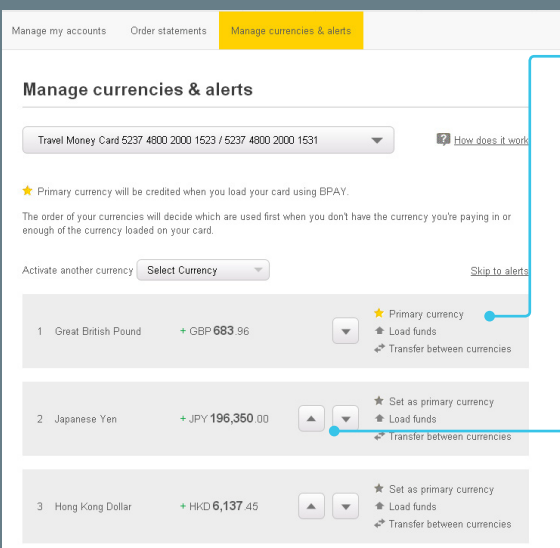
Hong Kong Dollar + HKD 6137.45 [Dropdown] [Amount] 1 HKD = 0.247804 AUD

[Amount] = AUD (Australian Dollar)

From the Transfers & BPAY® page:

- 1 Select the Travel Money Card you'd like to transfer between currencies on
- 2 An option will appear for you to select whether you'd like to transfer to an account or between the currencies on your card – select Between currencies
- 3 Select the currencies you're going to transfer between
- 4 Enter an amount and proceed with the transfer (your funds will transfer between currencies in real time).

CHANGE CURRENCY ORDER



Manage my accounts | Order statements | **Manage currencies & alerts**

Travel Money Card 5237 4800 2000 1523 / 5237 4800 2000 1531

★ Primary currency will be credited when you load your card using BPAY.

The order of your currencies will decide which are used first when you don't have the currency you're paying in or enough of the currency loaded on your card.

Activate another currency: [Select Currency] [Skip to alerts]

1	Great British Pound	+ GBP 683.96	★ Primary currency ⬆ Load funds ⚡ Transfer between currencies
2	Japanese Yen	+ JPY 196,350.00	★ Set as primary currency ⬆ Load funds ⚡ Transfer between currencies
3	Hong Kong Dollar	+ HKD 6,137.45	★ Set as primary currency ⬆ Load funds ⚡ Transfer between currencies

On this page you can:

- **Set a primary currency** – this currency will be the first one credited when you load your card using BPAY
- **Change the order of your activated currencies** – The currency order will appear on your NetBank homepage – the order of your currencies will decide which currency will be used if you do not have enough funds in that currency for the transaction. E.g. you have three currencies listed (1: USD, 2: GBP, 3: NZD). A purchase is NZ\$100 but you only have a balance of NZ\$50. Your card will check if you have enough USD to pay the full transaction. If you don't have enough USD then GBP will be checked. If no currency can pay the transaction, it will be declined.
- Set alerts for your Travel Money Card advising you:
 - When a certain currency dips below a chosen amount
 - Of your balance
 - To check your transaction history